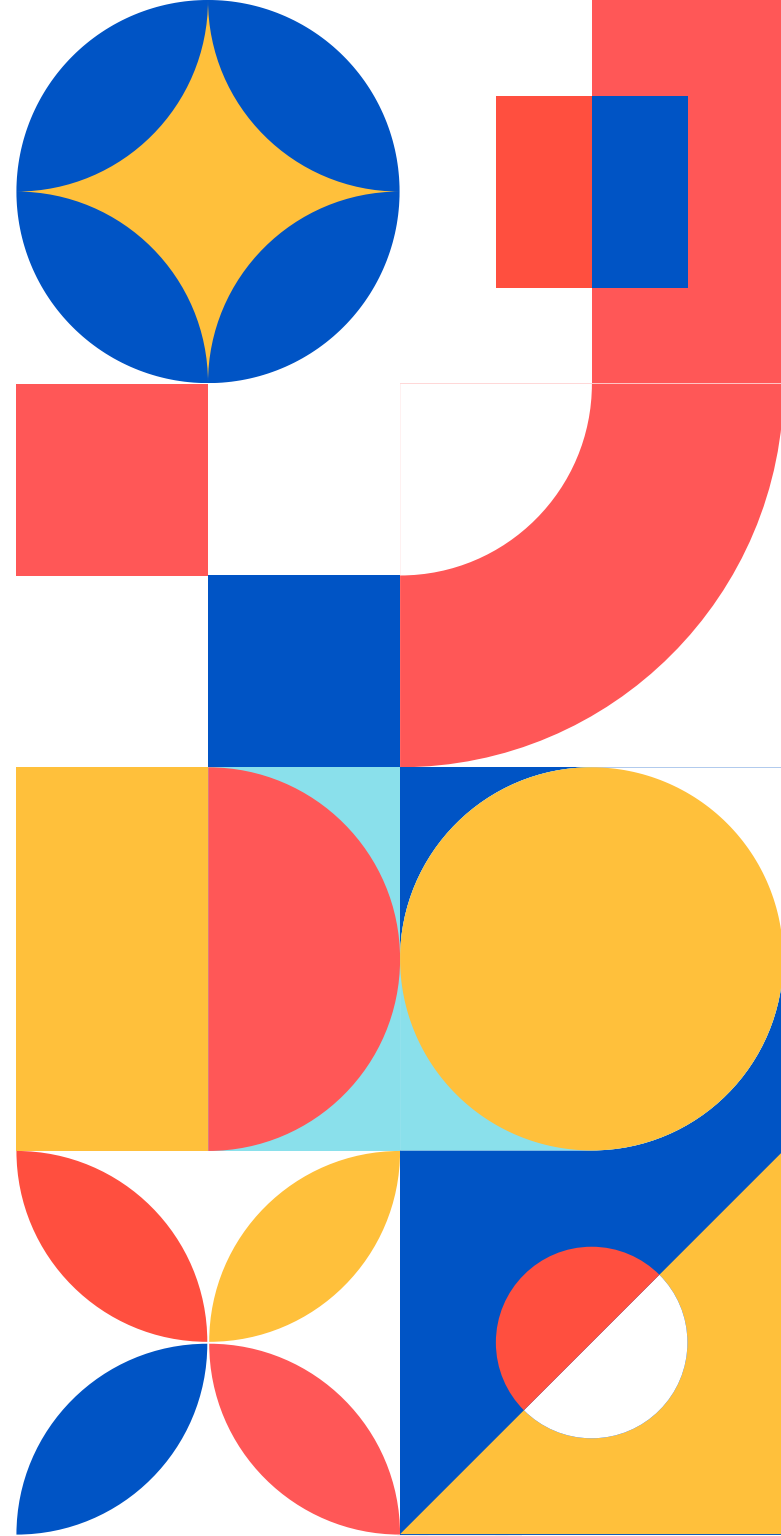




GROUNDWORK **LEADERSHIP**

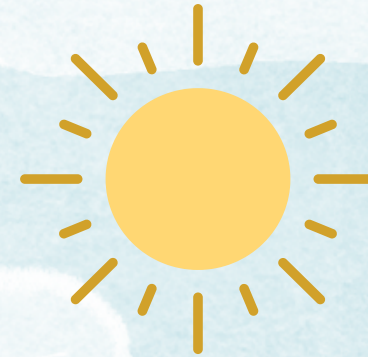
SEPT 7, 2023







BUILDING THE COHORT



Just right...

The initiative is for church members who **aspire** to or are **currently** leading in the local church or community.

Let's make it specific:

- Group leaders (small group)
- Interns
- Other ministry leaders
- Business leaders
- Community leaders
- aren't yet leading and want to know better
- potential elders
- church staff?

Not a good fit...

Examples

- people who are already overextended
- people who want to be elders - maybe not specific enough?
- People who aren't serving, aren't connecting



Not a good fit...

Examples

- dynamics



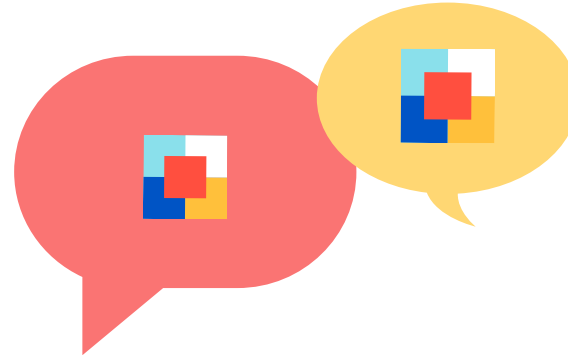
The background of the slide is a dense, repeating pattern of stylized human figures. These figures are depicted from the waist up, wearing various casual and business-casual clothing in a muted color palette of blues, greys, reds, and yellows. Many of the figures have speech bubbles above their heads, each containing a logo consisting of four small squares in red, blue, yellow, and white arranged in a 2x2 grid. The figures are scattered across the entire frame, creating a sense of a large, diverse group of people.

GETTING THE WORD OUT

GETTING THE WORD OUT



EMAILS



WORD OF MOUTH



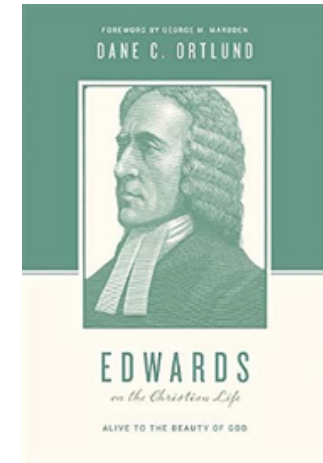
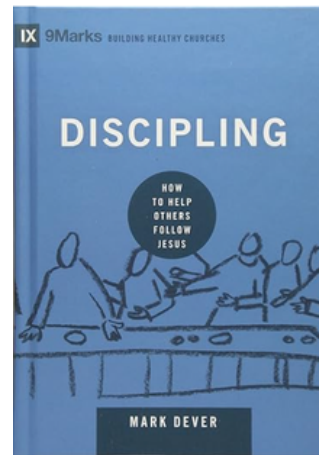
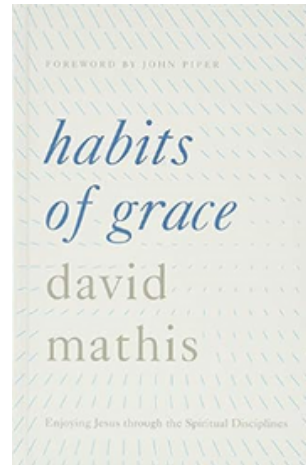
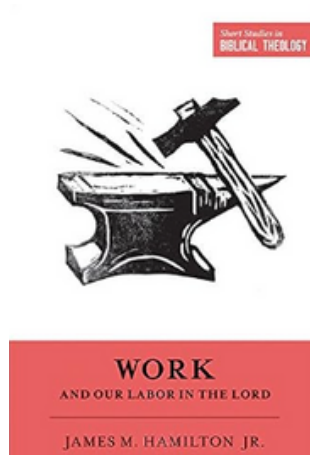
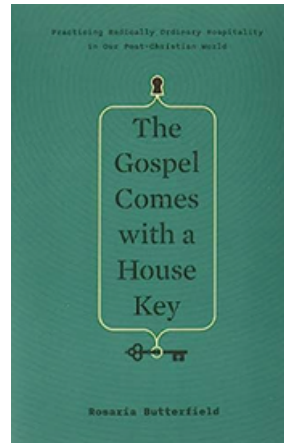
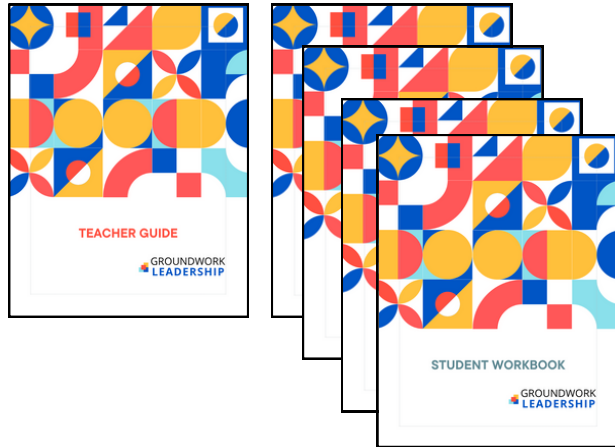
CARDS



Additional promotional ideas:

- make a list by talking to staff and lay leaders of potential cohort candidates
- not promoted widely at Grace
- group size between 6-12? (context-dependent)

SETTING THE STAGE - MATERIALS



SETTING THE STAGE - SET UP

MEAL

TEACHING SPACE SET-UP

SET-UP BEST PRACTICES

1. Get participants on an email list
2. Send Google calendar Google invites
3. Distribute list of dates
4. Reminders sent out (via email/ text)
5. Bookstore (10ofThose)

CLASSROOM ETHOS

- Show that you care (shepherding/ pastoring)
- Carefully cultivating conversation (listening, asking probing questions)
- Adapting to contextual challenges